



**King County**  
**Department of Community and Human Services**  
**Developmental Disabilities and Early Childhood Supports Division**  
**NOVEMBER BOARD FOR DEVELOPMENTAL DISABILITIES MEETING**

---

**Community Sharing and Celebrations:** Community members are asked to limit their sharing of information to two minutes each. We ask that all presenters share information with courtesy and respect to the audience.

**If you need American Sign Language (ASL) interpretation,** please request it in the Chat Box and staff will allow you to pin the screen of the ASL interpreters.


---

## **AGENDA**

<b>TIME</b>	<b>ITEM</b>	<b>PRESENTER</b>	<b>ACTION</b>
9:30 a.m.	Welcome and Board Introductions	Chair	Information
9:35	Chairs Remarks: <ul style="list-style-type: none"><li>• November Presentation</li><li>• December Board Business</li><li>• Sharing of Story</li></ul>	Chair	Information
9:50	Approval of October Minutes	Laura Escude	Approval
9:55	Public Input and Celebrations <ul style="list-style-type: none"><li>▪ Self-Advocates, Family and Allies</li><li>▪ Upcoming Events and Activities</li></ul>	Board	Information
10:05	Staff Reports: <ul style="list-style-type: none"><li>▪ DDA Staff Report</li><li>▪ King County Division Director's Report</li></ul>	Board and Community	Information
10:25	Break	Merri Snow Magan Cromar	Information
10:35	King County Developmental Disabilities 2023 Legislative Forum and Priorities	Staff	Information
11:30	Adjourn	Chair	

---

# Closed Captioning and American Sign Language Interpretation

- **Closed Captioning** of the meeting is available by clicking the  icon at the bottom of your screen.
- **If you need ASL interpretation** please request it in the Chat Box, and staff will allow you to pin the screen of the ASL interpreters.

# We Do Audio Description

## WHY?

Help low-vision people picture you

## HOW...

Say your name.

Use "AGREED" to describe yourself

## NAME

- Age
- Gender/Gender Expression
- Race/Skin Color/Ethnicity
- Eye and Hair Color
- Environment/Background
- Dress/Clothing/Wearables



# **Presentations & Presenters**

**Presenters give contact information at the end of their presentation. Look in the chat box. Feel free to contact them. Some of their slide shows and information sheets will be posted on our website.**



# What is a Developmental Disability?

The Washington State Developmental Disabilities Administration (DDA) defines a developmental disability as a disability attributed to an intellectual disability, cerebral palsy, epilepsy, autism, or another neurological or other condition.





**King County**  
**Department of Community and Human Services**  
**Developmental Disabilities and Early Childhood Supports Division**  
**NOVEMBER BOARD FOR DEVELOPMENTAL DISABILITIES MEETING**

---

**Community Sharing and Celebrations:** Community members are asked to limit their sharing of information to two minutes each. We ask that all presenters share information with courtesy and respect to the audience.

**If you need American Sign Language (ASL) interpretation,** please request it in the Chat Box and staff will allow you to pin the screen of the ASL interpreters.

---

## **AGENDA**

<b>TIME</b>	<b>ITEM</b>	<b>PRESENTER</b>	<b>ACTION</b>
9:30 a.m.	Welcome and Board Introductions	Chair	Information
9:35	Chairs Remarks: <ul style="list-style-type: none"><li>• November Presentation</li><li>• December Board Business</li><li>• Sharing of Story</li></ul>	Chair	Information
9:50	Approval of October Minutes	Laura Escude	Approval
9:55	Public Input and Celebrations <ul style="list-style-type: none"><li>▪ Self-Advocates, Family and Allies</li><li>▪ Upcoming Events and Activities</li></ul>	Board	Information
10:05	Staff Reports: <ul style="list-style-type: none"><li>▪ DDA Staff Report</li><li>▪ King County Division Director's Report</li></ul>	Board and Community	Information
10:25	Break	Merri Snow Magan Cromar	Information
10:35	King County Developmental Disabilities 2023 Legislative Forum and Priorities	Staff	Information
11:30	Adjourn	Chair	

---

# **CHAIRS'S REMARKS**

**November 2022**



# November Presentation:

- King County Developmental Disabilities 2023 Legislative Forum and Priorities

## December Board Business:

- Discussion of Meetings and Events in 2023
- Amending of Bylaws regarding Frequency of Board Meetings

## Sharing of Story

- Board Member, Laura Escude will share her story this month



**King County**  
**Department of Community and Human Services**  
**Developmental Disabilities and Early Childhood Supports Division**  
**NOVEMBER BOARD FOR DEVELOPMENTAL DISABILITIES MEETING**

---

**Community Sharing and Celebrations:** Community members are asked to limit their sharing of information to two minutes each. We ask that all presenters share information with courtesy and respect to the audience.

**If you need American Sign Language (ASL) interpretation,** please request it in the Chat Box and staff will allow you to pin the screen of the ASL interpreters.

---

## **AGENDA**

<b>TIME</b>	<b>ITEM</b>	<b>PRESENTER</b>	<b>ACTION</b>
9:30 a.m.	Welcome and Board Introductions	Chair	Information
9:35	Chairs Remarks: <ul style="list-style-type: none"><li>• November Presentation</li><li>• December Board Business</li><li>• Sharing of Story</li></ul>	Chair	Information
9:50	Approval of October Minutes	Laura Escude	Approval
9:55	Public Input and Celebrations <ul style="list-style-type: none"><li>▪ Self-Advocates, Family and Allies</li><li>▪ Upcoming Events and Activities</li></ul>	Board	Information
10:05	Staff Reports: <ul style="list-style-type: none"><li>▪ DDA Staff Report</li><li>▪ King County Division Director's Report</li></ul>	Board and Community	Information
10:25	Break	Merri Snow Magan Cromar	Information
10:35	King County Developmental Disabilities 2023 Legislative Forum and Priorities	Staff	Information
11:30	Adjourn	Chair	

---

# DDA Staff Report

## Merri Snow



# Developmental Disabilities and Early Childhood Supports Division Report November 2022



The logo features a large white circle centered on a solid blue background. Inside the circle, the text "Early Childhood Team" is written in a dark gray, sans-serif font. To the left of the circle, there is a dashed gray arc. At the bottom right of the circle, there is a small, solid dark gray circle.

**Early Childhood Team**

# What's coming Up?

## 2023 Best Starts Infant and Early Childhood Mental Health Opportunities |

- To learn more and to apply, visit [beststartworkshops.org](https://beststartworkshops.org)
- All IECMH opportunities are open to all King County P-5 providers, and space is limited for these ground-breaking series!



# What's coming up?

[Intergroup Dialogue for Equity Centered IECMH in King County](#). Last day to apply **Friday November 11, 2022.**

- 10 monthly sessions January - November 2023 (with a break in August)
- Small groups of 10-12 participants will meet for 90 minutes per session via Zoom

[IECMH Transformation, Healing, and Liberation in Reflective Practice](#), last day to apply **Tuesday November 15, 2022.**

- Ten monthly 90-minute reflective practice groups
- Six 3.5-hour training sessions
- Mentorship from experienced facilitators from the community

# What's coming up?

**IECMH Reflective Consultation Groups**, last day to apply **Monday November 18, 2022.**

We have reflective consultants who speak **English, Spanish, Mandarin, and American Sign Language.**

Community of Practice: **A Trauma Informed, Relational Frame for Prenatal to Five Providers**, last day to apply **December 30, 2022.**

- 8-part monthly series of trainings

If you have any questions please contact: Alicia [amartinez@kingcounty.gov](mailto:amartinez@kingcounty.gov), Soledad [scarrillo@kingcounty.gov](mailto:scarrillo@kingcounty.gov), or WESTED [bsk-wested@wested.org](mailto:bsk-wested@wested.org)

The logo features a large white circle centered on a solid blue background. The text "Adult Services Team" is written in a bold, dark gray sans-serif font across the middle of the white circle. To the left of the circle, there is a dashed gray arc. At the bottom right of the circle, there is a small, solid dark gray circle.

# Adult Services Team

# What's going on?



**School-to-Work**

**Employment Transition Program**

## **S2W Outreach |**

- The S2W Team has organized ongoing virtual outreach events this year and have also attended in-person events to connect with students, families and schools.
- The virtual outreach event invitations have been emailed to over 1,300 DDA eligible youth and their families with approximately 235 of those invitations translated into 28 languages other than English.

# What's coming up?

## **Community Inclusion Capacity Development |**

- The Adult Services Team is working in collaboration with DDA and service providers to build capacity for Community Inclusion Services in anticipation of concurrent services (Individual Employment and Community Inclusion) starting in January 2023.

A large white circle is centered on a blue background. A dashed grey line arcs from the top-left towards the middle of the circle's edge. A solid dark grey circle is positioned at the bottom-right edge of the white circle.

# **Community Information Outreach and Referral Team**

# What's going on?

## **King County Developmental Disabilities Legislative Priorities |**

- Legislative priorities, which were informed by the King County Developmental Disabilities Legislative Committee have been refined.
- Background papers are being developed to provide more information about each of the priorities. These priorities will be presented at the King County Developmental Disabilities Legislative Forum on Thursday, November 17.

# What's coming up?



## Developmental Disabilities Legislative Forum |

- Our 33<sup>rd</sup> Annual Developmental Disabilities Legislative Forum is coming up on Thursday, November 17! More details will be shared in the presentation!
- **It is important to note that you must register to attend.**  
Registration and event platform are multilingual. Individuals can register in many languages. Interpretation supports can be requested in the registration process, or by emailing Zayla Archuleta at [zarchuleta@kingcounty.gov](mailto:zarchuleta@kingcounty.gov)

# Seeking input

Please reach out if you have input/ feedback!

- Jim Ott, [jim.ott@kingcounty.gov](mailto:jim.ott@kingcounty.gov)
- Michaelle Monday, [michaelle.monday@kingcounty.gov](mailto:michaelle.monday@kingcounty.gov)
- Magan Cromar, [magan.cromar@kingcounty.gov](mailto:magan.cromar@kingcounty.gov)
- Holly Woo, [holly.woo@kingcounty.gov](mailto:holly.woo@kingcounty.gov)



**King County**  
**Department of Community and Human Services**  
**Developmental Disabilities and Early Childhood Supports Division**  
**NOVEMBER BOARD FOR DEVELOPMENTAL DISABILITIES MEETING**

---

**Community Sharing and Celebrations:** Community members are asked to limit their sharing of information to two minutes each. We ask that all presenters share information with courtesy and respect to the audience.

**If you need American Sign Language (ASL) interpretation,** please request it in the Chat Box and staff will allow you to pin the screen of the ASL interpreters.

---

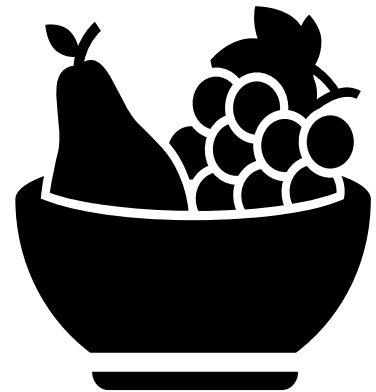
## **AGENDA**

<b>TIME</b>	<b>ITEM</b>	<b>PRESENTER</b>	<b>ACTION</b>
9:30 a.m.	Welcome and Board Introductions	Chair	Information
9:35	Chairs Remarks: <ul style="list-style-type: none"><li>• November Presentation</li><li>• December Board Business</li><li>• Sharing of Story</li></ul>	Chair	Information
9:50	Approval of October Minutes	Laura Escude	Approval
9:55	Public Input and Celebrations <ul style="list-style-type: none"><li>▪ Self-Advocates, Family and Allies</li><li>▪ Upcoming Events and Activities</li></ul>	Board	Information
10:05	Staff Reports: <ul style="list-style-type: none"><li>▪ DDA Staff Report</li><li>▪ King County Division Director's Report</li></ul>	Board and Community	Information
10:25	Break	Merri Snow Magan Cromar	Information
10:35	King County Developmental Disabilities 2023 Legislative Forum and Priorities	Staff	Information
11:30	Adjourn	Chair	

---

# We Are Taking A Break...

While you  
are waiting  
stretch,  
drink, have  
a snack





**King County**  
**Department of Community and Human Services**  
**Developmental Disabilities and Early Childhood Supports Division**  
**NOVEMBER BOARD FOR DEVELOPMENTAL DISABILITIES MEETING**

---

**Community Sharing and Celebrations:** Community members are asked to limit their sharing of information to two minutes each. We ask that all presenters share information with courtesy and respect to the audience.

**If you need American Sign Language (ASL) interpretation,** please request it in the Chat Box and staff will allow you to pin the screen of the ASL interpreters.

---

## **AGENDA**

<b>TIME</b>	<b>ITEM</b>	<b>PRESENTER</b>	<b>ACTION</b>
9:30 a.m.	Welcome and Board Introductions	Chair	Information
9:35	Chairs Remarks: <ul style="list-style-type: none"><li>• November Presentation</li><li>• December Board Business</li><li>• Sharing of Story</li></ul>	Chair	Information
9:50	Approval of October Minutes	Laura Escude	Approval
9:55	Public Input and Celebrations <ul style="list-style-type: none"><li>▪ Self-Advocates, Family and Allies</li><li>▪ Upcoming Events and Activities</li></ul>	Board	Information
10:05	Staff Reports: <ul style="list-style-type: none"><li>▪ DDA Staff Report</li><li>▪ King County Division Director's Report</li></ul>	Board and Community	Information
10:25	Break	Merri Snow Magan Cromar	Information
10:35	King County Developmental Disabilities 2023 Legislative Forum and Priorities	Staff	Information
11:30	Adjourn	Chair	

---

# King County Developmental Disabilities 2023 Legislative Forum & Priorities

---

Presented by DDECSD at  
King County Board for Developmental Disabilities  
November 2, 2022





# Acronyms

---

DDECSD: Developmental Disabilities and Early Childhood Supports Division

ESIT: Early Support for Infants and Toddlers

DSHS: Washington State Department of Social and Health Services

DDA: Washington State Developmental Disabilities Administration

# Developmental Disabilities Legislative Forum

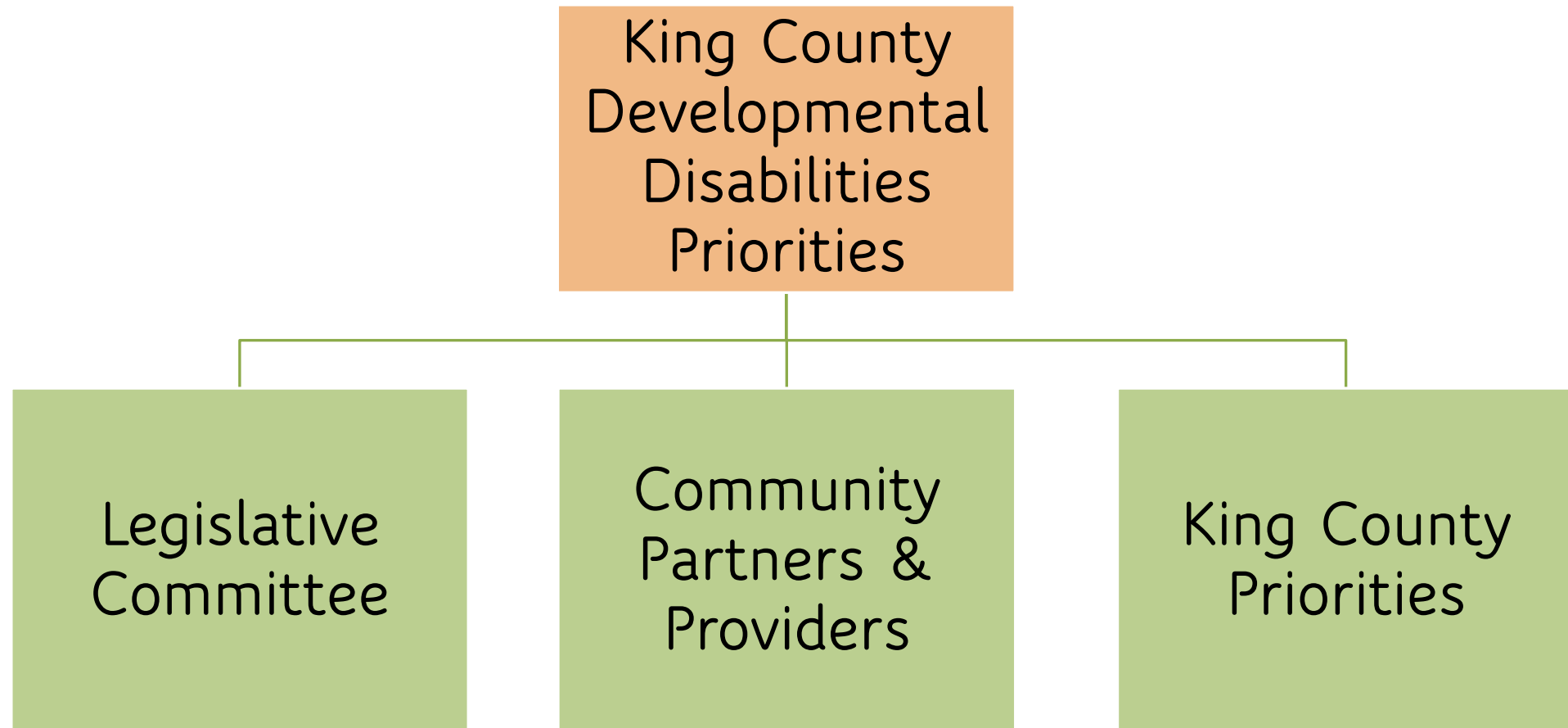
---

- 33<sup>rd</sup> year!
- Educate
- Connect
- Share



# How Are Priorities Informed?

---



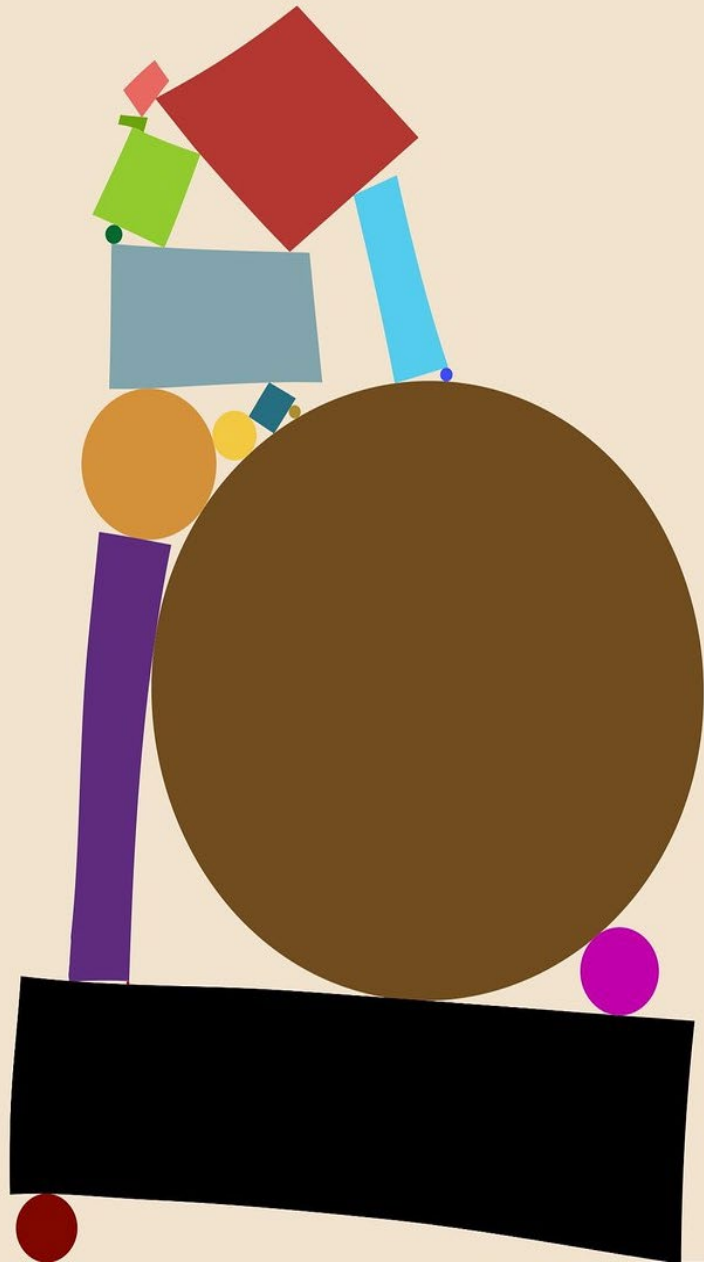
# Six Developmental Disabilities Legislative Priorities

---

# Increase funding for services that are linguistically accessible and culturally relevant.

Invest in interpretation, translation, cultural navigation, and other language and cultural supports so that all individuals with I/DD and their families can access services in their language and culture.





# Fund the DSHS Employment and Day Rate Study recommendations

Recommendations include increasing rates to stabilize provider networks to ensure community members access to services and increasing the county administration rate.

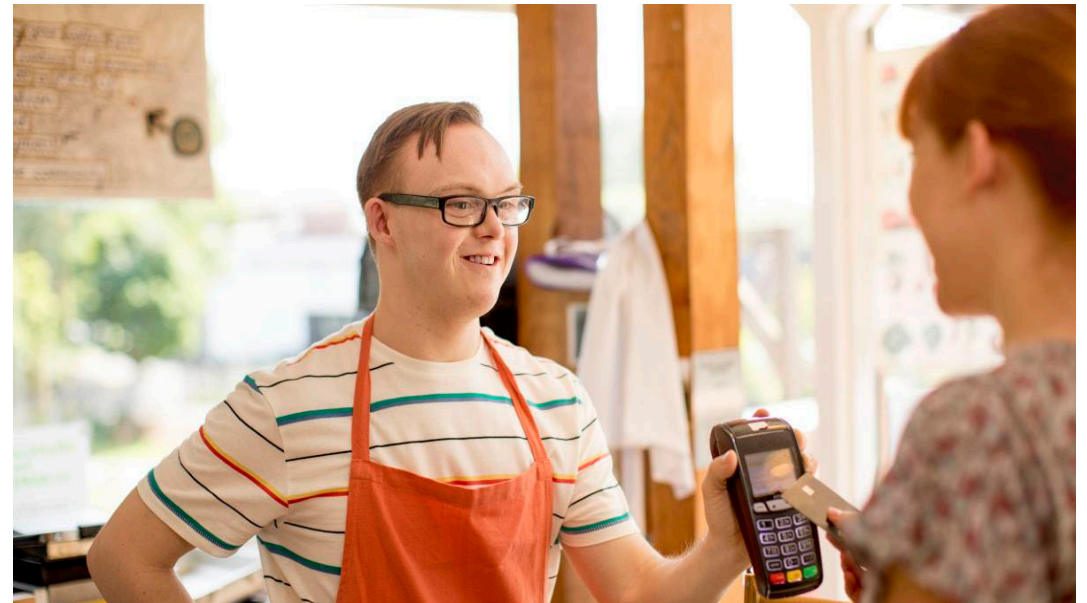
Improve access and eliminate barriers to quality supports and services for families with young children (0-5) with delays and disabilities.



Invest in coordinated efforts across systems to support child and family needs, including eliminating family out of pocket costs for Early Support for Infants and Toddlers (ESIT).

# Fund services for students leaving high school.

Provide Basic Plus Waiver services for State Developmental Disabilities Administration (DDA) eligible students leaving high school in 2023-2025 so they are supported in their journey beyond school.



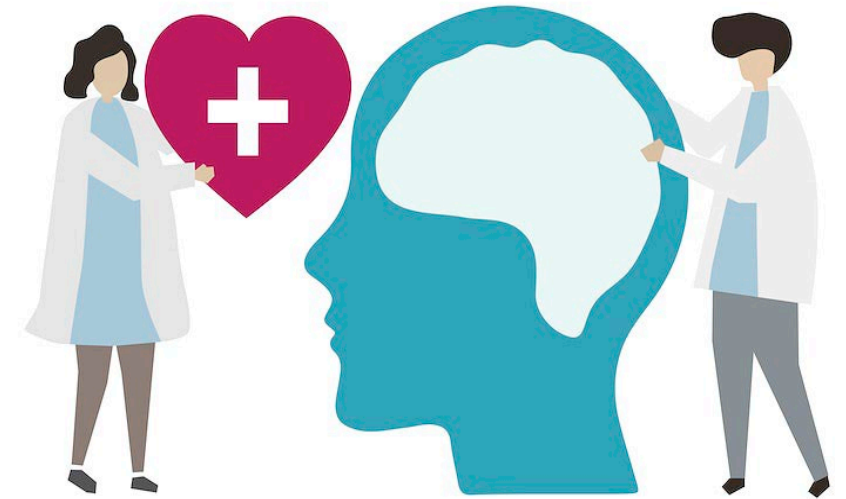
Invest in the Housing Trust Fund and other revenue sources to support community-based housing solutions.



These investments are needed so that people with I/DD and their families can live in safe and affordable housing in their local communities.

# Invest in I/DD behavioral health supports.

Individuals and families need a range of available behavioral health supports. The response to the growing behavioral health crisis must include I/DD informed comprehensive and accessible options in addition to out-of-home services



# Developmental Disabilities Legislative Forum

Thursday November 17, 2022

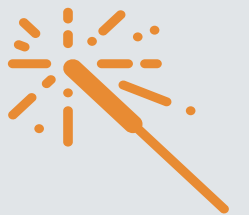
6:00 P.M. – Virtual Doors

6:15 P.M. – Connect with Legislators

6:45 P.M. – Break

7:00 P.M. – Legislative Forum Begins

8:30 P.M. – End of Program





# Register Today! Links in Chat

---

- Multilingual registration

  - [KCDDECSD webpage](#)

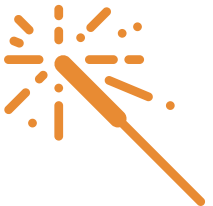
  - [InEvent Registration](#)

  - [KCDD Board Email List](#)

- Multilingual event web page

- One registration = One unique link to event (everyone must register)

- Interpreter Requests





**King County**  
**Department of Community and Human Services**  
**Developmental Disabilities and Early Childhood Supports Division**  
**NOVEMBER BOARD FOR DEVELOPMENTAL DISABILITIES MEETING**

---

**Community Sharing and Celebrations:** Community members are asked to limit their sharing of information to two minutes each. We ask that all presenters share information with courtesy and respect to the audience.

**If you need American Sign Language (ASL) interpretation,** please request it in the Chat Box and staff will allow you to pin the screen of the ASL interpreters.

---

## **AGENDA**

<b>TIME</b>	<b>ITEM</b>	<b>PRESENTER</b>	<b>ACTION</b>
9:30 a.m.	Welcome and Board Introductions	Chair	Information
9:35	Chairs Remarks: <ul style="list-style-type: none"><li>• November Presentation</li><li>• December Board Business</li><li>• Sharing of Story</li></ul>	Chair	Information
9:50	Approval of October Minutes	Laura Escude	Approval
9:55	Public Input and Celebrations <ul style="list-style-type: none"><li>▪ Self-Advocates, Family and Allies</li><li>▪ Upcoming Events and Activities</li></ul>	Board	Information
10:05	Staff Reports: <ul style="list-style-type: none"><li>▪ DDA Staff Report</li><li>▪ King County Division Director's Report</li></ul>	Board and Community	Information
10:25	Break	Merri Snow Magan Cromar	Information
10:35	King County Developmental Disabilities 2023 Legislative Forum and Priorities	Staff	Information
11:30	Adjourn	Chair	

---